



Grove Park, SE5 | Offers In Excess Of £2,050,000

02087028222

eastdulwich@pedderproperty.com

pedder
We live local



In General

- Five double bedrooms
- Four bathrooms
- Large south-facing rear garden
- Popular location
- Camberwell Grove conservation area
- Driveway / off-street parking
- High ceilings
- Beautiful period features
- Set over 2,500 Sq Ft

In Detail

An incredible five-bedroom, four-bathroom family home for sale in the heart of the sought-after Camberwell Grove conservation area, featuring a large south-facing rear garden.

Spanning over 2,500 sq ft, the property includes a 28ft double reception room with a bay window, an 18x12ft formal dining room attached to a fitted kitchen. There are five double bedrooms, of which the principal bedroom measures an impressive 18x13ft and spans the full width of the property, four bathrooms (two of which are en suite), and a landscaped south-facing rear garden. The home exudes character throughout, with high ceilings, beautiful fireplaces, wooden flooring, and many other charming details.

Grove Park is ideally situated for access to parks and green spaces, as well as the independent shops, bars, cafés, and restaurants of Bellenden Road and Lordship Lane. Camberwell and Peckham are also nearby. Excellent transport links to the City and West End are available via Denmark Hill station (0.4 miles) and Peckham Rye station (0.7 miles), complemented by bus/cycle routes through neighbouring Dulwich Village, Camberwell, and Herne Hill.

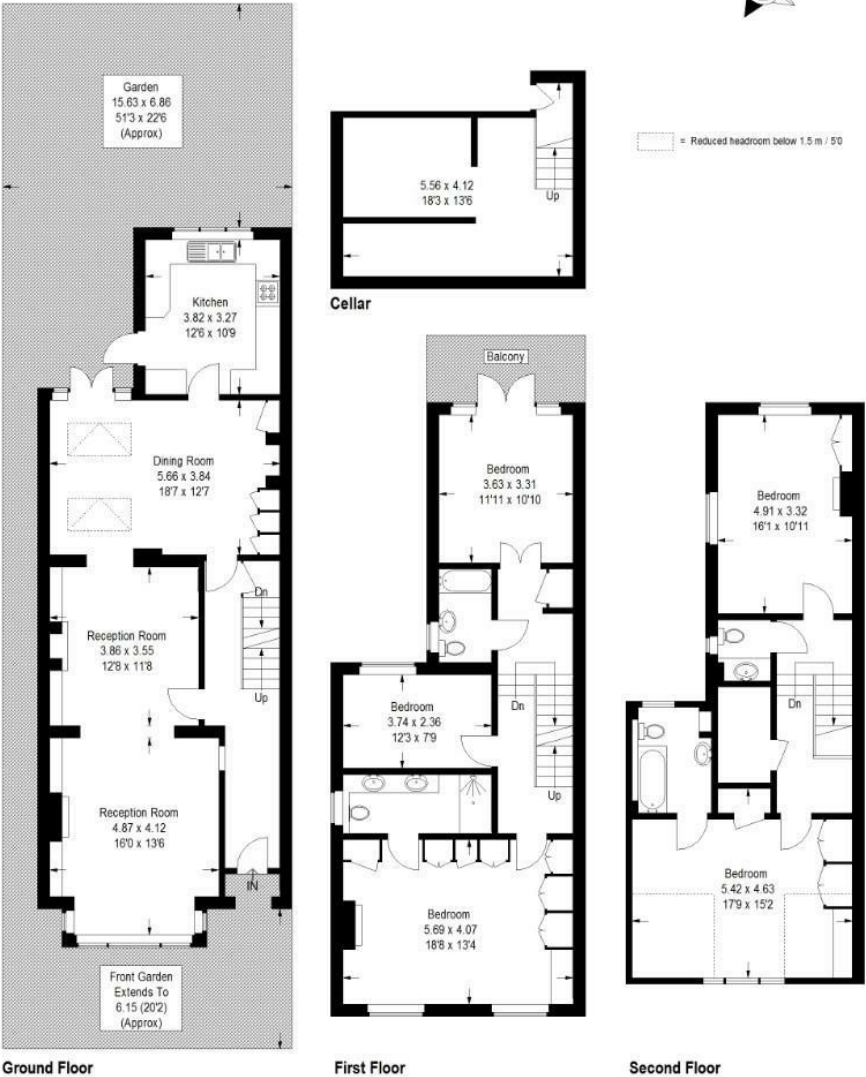
EPC: E | Council Tax Band: G



Floorplan

Grove Park, SE5

Approximate Gross Internal Area
233.8 sq m / 2517 sq ft

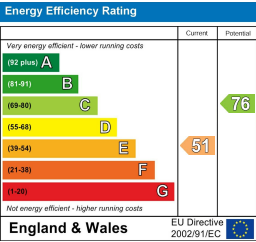


Ground Floor

First Floor

Second Floor

Copyright www.pedderproperty.com © 2025
These plans are for representation purposes only as defined by RICS - Code of Measuring Practice.
Not drawn to Scale. Windows and door openings are approximate. Please check all dimensions,
shapes and compass bearings before making any decisions reliant upon them.



Pedder Property Ltd trading as Pedder for themselves and for the vendor/landlord of this property whose agents they are, give notice that (1) these particulars do not constitute any part of an offer or contract, (2) all statements contained within these particulars are made without responsibility on the part of Pedder or the vendor/landlord, (3) whilst made in good faith, none of the statements contained within these particulars are to be relied upon as a statement of representation or fact, (4) any intending purchaser/tenant must satisfy him/herself by inspection or otherwise as to the correctness of each of the statements contained within these particulars, (5) the vendor/landlord does not make or give either Pedder or any person in their employment any authority to make or give representation or warranty whatsoever in relation to this property.